

ERC, MRC and XRC Controller

**Floppy Disk
Emulator for
Windows®
Instructions Manual**

Part Number: 141457-1
Revision: 2

MOTOMAN
a YASKAWA company

Motoman, Incorporated
805 Liberty Lane
West Carrollton, OH 45449
TEL: (937) 847-6200
FAX: (937) 847-6277
24-Hour Service Hotline: (937) 847-3200

COMPLETE OUR ONLINE SURVEY

Motoman is committed to total customer satisfaction! Please give us your feedback on the technical manuals you received with your Motoman robotic solution.

To participate, go to the following website:

<http://www.motoman.com/pubs/survey.php>

The information contained within this document is the proprietary property of Motoman, Inc., and may not be copied, reproduced or transmitted to other parties without the expressed written authorization of Motoman, Inc.

©2006 by MOTOMAN
All Rights Reserved

Because we are constantly improving our products, we reserve the right to change specifications without notice. MOTOMAN is a registered trademark of YASKAWA Electric Manufacturing.

TABLE OF CONTENTS

<u>Section</u>	<u>Page</u>
LIST OF FIGURES.....	iv
LIST OF TABLES.....	iv
1 INTRODUCTION	
1.1 General Description.....	1-1
1.2 How to Use this Manual.....	1-1
1.3 Equipment and Supplies Required.....	1-1
2 SAFETY	
2.1 Introduction.....	2-1
2.2 Standard Conventions.....	2-2
2.3 General Safeguarding Tips.....	2-3
2.4 Mechanical Safety Devices.....	2-3
2.5 Installation Safety.....	2-4
2.6 Programming Safety.....	2-4
2.7 Operation Safety.....	2-5
2.8 Maintenance Safety.....	2-5
3 INSTALLING THE PROGRAM	
3.1 Communication Cable.....	3-1
3.2 Installation and Startup.....	3-2
4 OPERATING FDE WITH AN ERC CONTROLLER	
4.1 Memory Display Limitations.....	4-1
4.2 Formatting Disks.....	4-1
4.3 Jobs.....	4-1
4.3.1 Saving All Jobs.....	4-2
4.3.2 Saving Selected Jobs.....	4-2
4.3.3 Loading Jobs.....	4-3
4.4 Conditional Program Data.....	4-3
4.4.1 Saving Conditional Program Data.....	4-4
4.4.2 Loading Conditional Program Data.....	4-4
4.5 All User's Programs.....	4-5
4.6 Parameters.....	4-5
4.6.1 Saving Parameters.....	4-5
4.6.2 Loading Parameters.....	4-5

<u>Section</u>	<u>Page</u>
4.7 I/O System Data.....	4-6
4.7.1 Saving I/O System Data.....	4-6
4.7.2 Loading I/O System Data.....	4-6
4.8 All Data in CMOS.....	4-7
4.8.1 Saving All Data in CMOS.....	4-7
4.8.2 Loading All Data in CMOS.....	4-8
4.9 Other FDE Features.....	4-8
4.9.1 Verifying Jobs.....	4-8
4.9.2 Deleting Files.....	4-9
5 OPERATING FDE WITH AN MRC CONTROLLER	
5.1 Memory Display Limitations.....	5-1
5.2 Formatting Disks.....	5-1
5.3 Setting the Communications.....	5-1
5.4 Jobs.....	5-2
5.4.1 Saving All Jobs.....	5-3
5.4.2 Saving Selected Jobs.....	5-3
5.4.3 Loading Jobs.....	5-4
5.5 Conditional Files/Universal Data.....	5-4
5.5.1 Saving Conditional Files/Universal Data.....	5-5
5.5.2 Loading Conditional Files/Universal Data.....	5-5
5.6 Batch Standard User Memory.....	5-6
5.6.1 Saving Batch Standard User Memory.....	5-6
5.6.2 Loading Batch Standard User Memory.....	5-7
5.7 Parameters.....	5-7
5.7.1 Saving Parameters.....	5-7
5.7.2 Loading Parameters.....	5-8
5.8 C. I/O Program/I/O Name.....	5-9
5.8.1 Saving C. I/O Program/I/O Name.....	5-9
5.8.2 Loading C. I/O Program/I/O Name.....	5-10
5.9 Customer Data.....	5-11
5.9.1 Saving Customer Data.....	5-11
5.9.2 Loading Customer Data.....	5-12
5.10 Batch Standard CMOS.....	5-13
5.10.1 Saving Batch Standard CMOS.....	5-13
5.10.2 Loading Batch Standard CMOS.....	5-13
5.11 All CMOS Area.....	5-14
5.11.1 Saving All CMOS Area.....	5-14
5.11.2 Loading All CMOS Area.....	5-15

<u>Section</u>	<u>Page</u>
5.12 Other FDE Features.....	5-16
5.12.1 Verifying Jobs.....	5-16
5.12.2 Deleting Files.....	5-16
6 OPERATING FDE WITH AN XRC CONTROLLER	
6.1 Memory Display Limitations.....	6-1
6.2 Formatting Disks.....	6-1
6.3 Configuring XRC for FDE/WIN Operation.....	6-2
6.3.1 Selecting Serial Communications Port.....	6-2
6.3.2 Serial Communications Protocol Configuring.....	6-2
6.4 Jobs.....	6-3
6.4.1 Saving All Jobs.....	6-4
6.4.2 Saving Selected Jobs.....	6-4
6.4.3 Loading Jobs.....	6-5
6.5 Condition Files/General Data.....	6-5
6.5.1 Saving Condition Files/General Data.....	6-6
6.5.2 Loading Condition Files/General Data.....	6-6
6.6 Batch User Memory.....	6-7
6.6.1 Saving Batch User Memory.....	6-7
6.6.2 Loading Batch User Memory.....	6-8
6.7 Parameters.....	6-8
6.7.1 Saving Parameters.....	6-8
6.7.2 Loading Parameters.....	6-9
6.8 C. I/O Program/I/O Name.....	6-10
6.8.1 Saving C. I/O Program/I/O Name.....	6-10
6.8.2 Loading C. I/O Program/I/O Name.....	6-11
6.9 System Data.....	6-12
6.9.1 Saving System Data.....	6-12
6.9.2 Loading System Data.....	6-13
6.10 Batch CMOS.....	6-14
6.10.1 Saving Batch CMOS.....	6-14
6.10.2 Loading Batch CMOS.....	6-14
6.11 Other FDE Features.....	6-15
6.11.1 Verifying Jobs.....	6-15
6.11.2 Deleting Files.....	6-16
7 TROUBLESHOOTING	
INDEX	

LIST OF FIGURES

<u>Figure</u>		<u>Page</u>
Figure 3-1	RS-232C Serial Cable Connections Between the Controller and PC.....	3-1
Figure 3-2	The FDE for Windows Icon.....	3-3
Figure 3-3	The FDE for Windows Screen	3-3
Figure 3-4	The FDE Configuration Screen.....	3-4

LIST OF TABLES

<u>Table</u>		<u>Page</u>
Table 7-1	Troubleshooting (for ERC Controllers)	7-1
Table 7-2	Troubleshooting (for MRC Controllers).....	7-2
Table 7-3	Troubleshooting (for XRC Controllers).....	7-3

SECTION 1

INTRODUCTION

The Floppy Disk Emulator (FDE) for Windows software package allows robot programs to be uploaded, downloaded, and deleted from an IBM-compatible computer via RS232 serial communications. The software package is compatible with the ERC, MRC, and XRC controllers.

1.1 General Description

FDE for Windows, Version 2.xx software package (P/N 141460-1) includes the following items:

- CD Browser (141720-1)
- 9-pin to 9-pin RS-232 serial interface cable, Null Modem (147235-1)
- Hardware key (P/N 141722-1)
- FDE for Windows, Version 2 User's Manual (P/N 141457-1)

One RS-232 serial interface cable, 9 pin to 9 pin

Null Modem (Motoman Part Number 147235-1)

1.2 How to Use this Manual

This manual contains instructions to use the FDE for Windows, Version 2.xx with an ERC, MRC, or XRC controller. Section 3 contains the installation and startup instructions for all three controllers. If you have an ERC controller, please see Section 4 for operating instructions. If you have an MRC controller, please see Section 5 for operating instructions. If you have an XRC controller, please see Section 6 for operating instructions. Section 7 contains troubleshooting information for all three controllers.

Please be sure to read the remainder of Section 1 and Section 2, SAFETY, before continuing.

1.3 Equipment and Supplies Required

PC or compatible computer with:

- Windows 98[®], NT[®] 4.0 Service Pack 3 or later, 2000, XP
- EGA or VGA video adapter
- At least one serial communications port, (COM1 through COM4 are supported)
- 512k free conventional memory
- 500k hard disk space available

SECTION 2

SAFETY

2.1 Introduction

It is the purchaser's responsibility to ensure that all local, county, state, and national codes, regulations, rules, or laws relating to safety and safe operating conditions for each installation are met and followed.

We suggest that you obtain and review a copy of the ANSI/RIA National Safety Standard for Industrial Robots and Robot Systems. This information can be obtained from the Robotic Industries Association by requesting ANSI/RIA R15.06. The address is as follows:

Robotic Industries Association

900 Victors Way

P.O. Box 3724

Ann Arbor, Michigan 48106

TEL: 313/994-6088

FAX: 313/994-3338

Ultimately, the best safeguard is trained personnel. The user is responsible for providing personnel who are adequately trained to operate, program, and maintain the robot cell. **The robot must not be operated by personnel who have not been trained!**

We recommend that all personnel who intend to operate, program, repair, or use the robot system be trained in an approved Motoman training course and become familiar with the proper operation of the system.

This safety section addresses the following:

- Standard Conventions (Section 2.2)
- General Safeguarding Tips (Section 2.3)
- Mechanical Safety Devices (Section 2.4)
- Installation Safety (Section 2.5)
- Programming Safety (Section 2.6)
- Operation Safety (Section 2.7)
- Maintenance Safety (Section 2.8)

2.2 **Standard Conventions**

This manual includes information essential to the safety of personnel and equipment. As you read through this manual, be alert to the four signal words:

- DANGER
- WARNING
- CAUTION
- NOTE

Pay particular attention to the information provided under these headings which are defined below (in descending order of severity).



DANGER!

Information appearing under the DANGER caption concerns the protection of personnel from the immediate and imminent hazards that, if not avoided, will result in immediate, serious personal injury or loss of life in addition to equipment damage.



WARNING!

Information appearing under the WARNING caption concerns the protection of personnel and equipment from potential hazards that can result in personal injury or loss of life in addition to equipment damage.



CAUTION!

Information appearing under the CAUTION caption concerns the protection of personnel and equipment, software, and data from hazards that can result in minor personal injury or equipment damage.

NOTE:

Information appearing in a NOTE caption provides additional information which is helpful in understanding the item being explained.

2.3 General Safeguarding Tips

All operators, programmers, plant and tooling engineers, maintenance personnel, supervisors, and anyone working near the robot must become familiar with the operation of this equipment. All personnel involved with the operation of the equipment must understand potential dangers of operation. General safeguarding tips are as follows:

- Improper operation can result in personal injury and/or damage to the equipment. Only trained personnel familiar with the operation of this robot, the operator's manuals, the system equipment, and options and accessories should be permitted to operate this robot system.
- Do not enter the robot cell while it is in automatic operation. Programmers must have the teach pendant when they enter the robot cell.
- Improper connections can damage the robot. All connections must be made within the standard voltage and current ratings of the robot I/O (Inputs and Outputs).
- The robot must be placed in Emergency Stop (E-STOP) mode whenever it is not in use.
- In accordance with ANSI/RIA R15.06, section 6.13.4 and 6.13.5, use lockout/tagout procedures during equipment maintenance. Refer also to Section 1910.147 (29CFR, Part 1910), Occupational Safety and Health Standards for General Industry (OSHA).

2.4 Mechanical Safety Devices

The safe operation of the robot, positioner, auxiliary equipment, and system is ultimately the user's responsibility. The conditions under which the equipment will be operated safely should be reviewed by the user. The user must be aware of the various national codes, ANSI/RIA R15.06 safety standards, and other local codes that may pertain to the installation and use of industrial equipment. Additional safety measures for personnel and equipment may be required depending on system installation, operation, and/or location. The following safety measures are available:

- Safety fences and barriers
- Light curtains
- Door interlocks
- Safety mats
- Floor markings
- Warning lights

Check all safety equipment frequently for proper operation. Repair or replace any non-functioning safety equipment immediately.

2.5 **Installation Safety**

Safe installation is essential for protection of people and equipment. The following suggestions are intended to supplement, but not replace, existing federal, local, and state laws and regulations. Additional safety measures for personnel and equipment may be required depending on system installation, operation, and/or location. Installation tips are as follows:

- Be sure that only qualified personnel familiar with national codes, local codes, and ANSI/RIA R15.06 safety standards are permitted to install the equipment.
- Identify the work envelope of each robot with floor markings, signs, and barriers.
- Position all controllers outside the robot work envelope.
- Whenever possible, install safety fences to protect against unauthorized entry into the work envelope.
- Eliminate areas where personnel might get trapped between a moving robot and other equipment (pinch points).
- Provide sufficient room inside the workcell to permit safe teaching and maintenance procedures.

2.6 **Programming Safety**

All operators, programmers, plant and tooling engineers, maintenance personnel, supervisors, and anyone working near the robot must become familiar with the operation of this equipment. All personnel involved with the operation of the equipment must understand potential dangers of operation. Programming tips are as follows:

- Any modifications to PART 1 of the MRC controller PLC can cause severe personal injury or death, as well as damage to the robot! Do not make any modifications to PART 1. Making any changes without the written permission of Motoman will **VOID YOUR WARRANTY!**
- Some operations require standard passwords and some require special passwords. Special passwords are for Motoman use only. **YOUR WARRANTY WILL BE VOID** if you use these special passwords.
- Back up all programs and jobs onto a floppy disk whenever program changes are made. To avoid loss of information, programs, or jobs, a backup must always be made before any service procedures are done and before any changes are made to options, accessories, or equipment.
- The concurrent I/O (Input and Output) function allows the customer to modify the internal ladder inputs and outputs for maximum robot performance. Great care must be taken when making these modifications. Double-check all modifications under every mode of robot operation to ensure that you have not created hazards or dangerous situations that may damage the robot or other parts of the system.

- Improper operation can result in personal injury and/or damage to the equipment. Only trained personnel familiar with the operation, manuals, electrical design, and equipment interconnections of this robot should be permitted to operate the system.
- Inspect the robot and work envelope to be sure no potentially hazardous conditions exist. Be sure the area is clean and free of water, oil, debris, etc.
- Be sure that all safeguards are in place.
- Check the E-STOP button on the teach pendant for proper operation before programming.
- Carry the teach pendant with you when you enter the workcell.
- Be sure that only the person holding the teach pendant enters the workcell.
- Test any new or modified program at low speed for at least one full cycle.

2.7 Operation Safety

All operators, programmers, plant and tooling engineers, maintenance personnel, supervisors, and anyone working near the robot must become familiar with the operation of this equipment. All personnel involved with the operation of the equipment must understand potential dangers of operation. Operation tips are as follows:

- Be sure that only trained personnel familiar with the operation of this robot, the operator's manuals, the system equipment, and options and accessories are permitted to operate this robot system.
- Check all safety equipment for proper operation. Repair or replace any non-functioning safety equipment immediately.
- Inspect the robot and work envelope to ensure no potentially hazardous conditions exist. Be sure the area is clean and free of water, oil, debris, etc.
- Ensure that all safeguards are in place.
- Improper operation can result in personal injury and/or damage to the equipment. Only trained personnel familiar with the operation, manuals, electrical design, and equipment interconnections of this robot should be permitted to operate the system.
- Do not enter the robot cell while it is in automatic operation. Programmers must have the teach pendant when they enter the cell.
- The robot must be placed in Emergency Stop (E-STOP) mode whenever it is not in use.
- This equipment has multiple sources of electrical supply. Electrical interconnections are made between the controller, external servo box, and other equipment. Disconnect and lockout/tagout all electrical circuits before making any modifications or connections.
- All modifications made to the controller will change the way the robot operates and can cause severe personal injury or death, as well as damage the robot. This includes controller parameters, ladder parts 1 and 2, and I/O (Input and Output) modifications. Check and test all changes at slow speed.

2.8 Maintenance Safety

All operators, programmers, plant and tooling engineers, maintenance personnel, supervisors, and anyone working near the robot must become familiar with the operation of this equipment. All personnel involved with the operation of the

equipment must understand potential dangers of operation. Maintenance tips are as follows:

- Do not perform any maintenance procedures before reading and understanding the proper procedures in the appropriate manual.
- Check all safety equipment for proper operation. Repair or replace any non-functioning safety equipment immediately.
- Improper operation can result in personal injury and/or damage to the equipment. Only trained personnel familiar with the operation, manuals, electrical design, and equipment interconnections of this robot should be permitted to operate the system.
- Back up all your programs and jobs onto a floppy disk whenever program changes are made. A backup must always be made before any servicing or changes are made to options, accessories, or equipment to avoid loss of information, programs, or jobs.
- Do not enter the robot cell while it is in automatic operation. Programmers must have the teach pendant when they enter the cell.
- The robot must be placed in Emergency Stop (E-STOP) mode whenever it is not in use.
- Be sure all safeguards are in place.
- Use proper replacement parts.
- This equipment has multiple sources of electrical supply. Electrical interconnections are made between the controller, external servo box, and other equipment. Disconnect and lockout/tagout all electrical circuits before making any modifications or connections.
- All modifications made to the controller will change the way the robot operates and can cause severe personal injury or death, as well as damage the robot. This includes controller parameters, ladder parts 1 and 2, and I/O (Input and Output) modifications. Check and test all changes at slow speed.
- Improper connections can damage the robot. All connections must be made within the standard voltage and current ratings of the robot I/O (Inputs and Outputs).

SECTION 3

INSTALLING THE PROGRAM

This section contains instructions for installation, startup, and operation of the FDE for Windows Package (P/N 141460-1) with on an ERC, MRC, or XRC controller.

3.1 Communication Cable

You can use the 9-pin to 9-pin serial communication cable supplied with your Visual DCI package, or you can make a cable to suit your specific needs. The pin-outs for the 9-pin to 9-pin cable are shown in Figure 3-1. To connect the computer to the robot controller, proceed as follows:

1. Connect the male end of the serial communication cable (P/N 147235-1) to the 9-pin serial port at the bottom of the teach pendant.
2. Connect the other end of the cable to the serial port on the computer.
3. Attach the hardware key to the parallel port LPT1 on the computer.

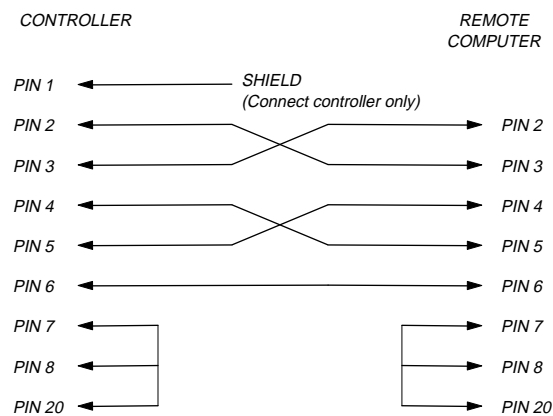


Figure 3-1 RS-232C Serial Cable Connections Between the Controller and PC

3.2 **Installation and Startup**

NOTE: This manual assumes that you are familiar with basic Windows terms and operations. If this is not the case, please consult your Microsoft Windows documentation.

To install FDE, proceed as follows:

1. Insert the CD-ROM Browser disc into your CD-ROM drive.
2. The setup program should execute automatically.

NOTE: Setup will execute automatically when the CD is inserted into your CD-ROM drive unless autoexecute has been disabled on your computer. If the setup program does not autoexecute, you can select *demo32.exe* from the CD-ROM Open Properties dialog. Demoshield Player will appear and prompt you for a ".dbd" file. Double-click "*.dbd" to begin the install process.

3. An introduction screen will appear. Click Next to continue the installation.
4. Three option buttons are displayed:
 - Install Motoman Software
 - Exit
 - Learn about Motoman Software

Click *Install Motoman Software*.

5. A Motoman Software License Agreement page will appear. Click *Yes* to agree to the terms outlined in the scrolling window.
6. A software selection screen will appear. Click the desired software button to install the software you purchased.

NOTE: You can install any of the software titles on the CD-ROM, but you must install a hardware security key for each package you purchased. If the hardware key is not installed, you will not be able to run the software you purchased.

7. After you make your software bundle selection, a package selection screen will appear. Click the desired package button to install the software package you purchased.
8. The CD-ROM Browser will display a list of software titles included in the purchased bundle.
9. Click the displayed buttons to begin installation of the software.
10. Installers for each of the selected packages will guide you through the installation process.

NOTE: FDE for Windows will not function until you have installed the hardware key (see 1.6.2). All the software titles within the same package use the same hardware key.

To start FDE for Windows, proceed as follows:

1. Select the Motoman Group from the Windows Program Manager.
2. Double click on the FDE for Windows icon, as shown in Figure 3-2.

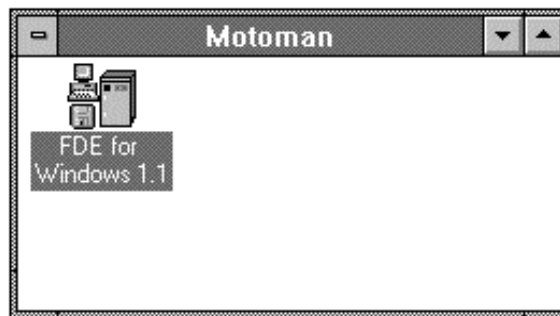


Figure 3-2 The FDE for Windows Icon

This will start the FDE for Windows program and open the FDE for Windows screen, as shown in Figure 3-3.

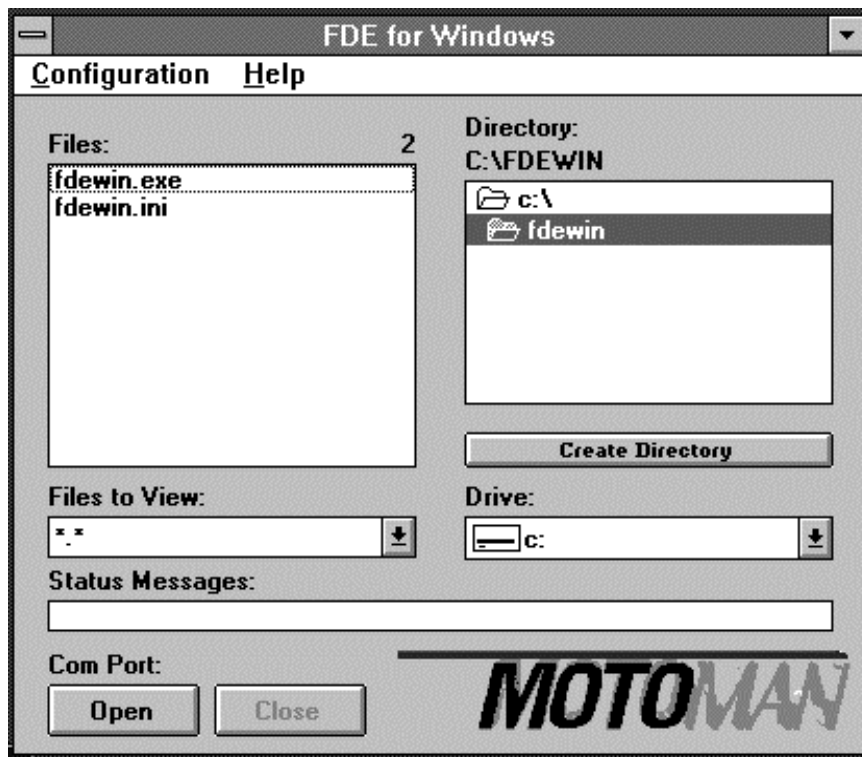


Figure 3-3 The FDE for Windows Screen

14. Open the Configuration menu and select the Settings option. You can do this with the mouse or by pressing Ctrl + S.

This opens the FDE Configuration screen, as shown in Figure 3-4. To configure the program for your application, proceed as follows:

15. Set the serial port used by FDE for Windows (Com 1 thru Com 4 are supported). Choose the port that connects to the cable.
16. Set the baud rate, the data bits, the parity, and the stop bits for communication between the computer and the robot controller. The defaults are 4800, 8, Even, and 1.
17. Select the "Open Comm on Startup" box if you want the FDE for Windows program to launch automatically on startup of the program. An X will appear if you click on the box to indicate that this option is selected.

18. Select "Run Minimized on Startup" if you want to display the small "FDE for Windows" icon on the main Windows File Manager screen when the FDE for Windows program is running. An X will appear if you click on the box to indicate that this option is selected.
19. The target directory specifies the path where the robot data will be stored and retrieved. To select the target directory, click the "Dir" box and double-click on the desired directory. The drive can be any valid hard or floppy drive. The path can be any existing valid directory path. The installation program will set this line based upon the values specified for the disk drive and path during the install process. Refer to step 6 above.

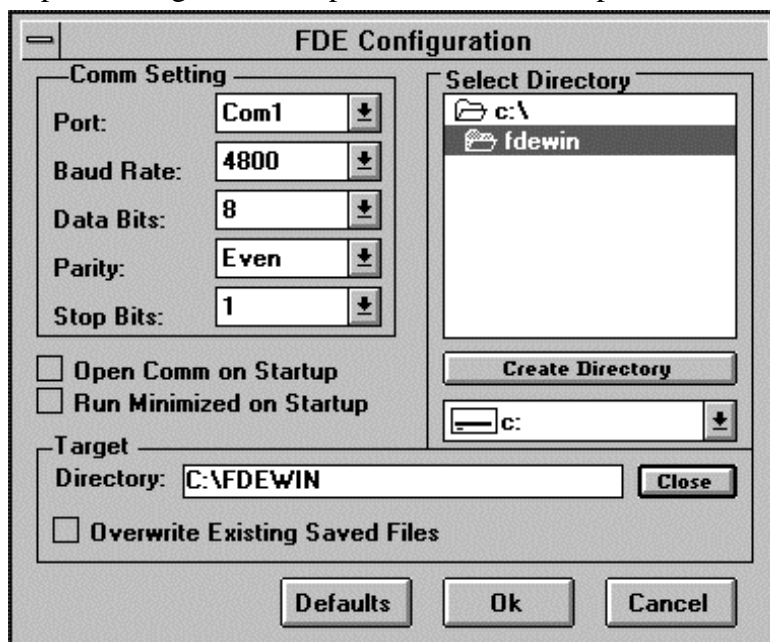


Figure 3-4 The FDE Configuration Screen

20. Select "Overwrite Existing Saved Files" if you want to allow existing files in the computer to be overwritten by the robot controller without displaying an error message. An X will appear if you click on the box to indicate that this option is selected. When the overwrite option is not selected the user will get an error message when a job transferred from the robot controller has the same name as a job existing in the computer.
21. Click on the "OK" box if you want to accept the configuration choices you have made. The FDE for Windows screen will appear. Or, click on the "Cancel" box to exit the FDE Configuration screen without saving any changes. If you click on the "Default" box, all the configuration settings will change to the default installation settings.
22. In the FDE for Windows screen, select "Open" to open the com port and enable the transfer of files.

At this point, data transfer can begin.

- If you have an ERC controller, refer to Section 4 for transfer procedures.
- If you have an MRC controller, refer to Section 5 for transfer procedures.
- If you have an XRC controller, refer to Section 6 for transfer procedures.

SECTION 4

OPERATING FDE WITH AN ERC CONTROLLER

This section contains instructions for the operation of the FDE for Windows (P/N 141460-1) with an ERC controller.

Refer to the following sections for data transfer procedure:

- Jobs (Section 4.3)
- Conditional Program Data (Section 4.4)
- All User's Programs (Section 4.5)
- Parameters (Section 4.6)
- I/O System Data (Section 4.7)
- All Data in CMOS (Section 4.8)
- Others (Section 4.9)

All data transfers must be initiated from the robot controller. All program functions are carried out on the control panel of the robot controller. The file transfer status can be viewed from the computer. When information transfer is finished, press Ctrl + X (or double click the system control box in the upper left corner of the screen) to exit the program.

4.1 *Memory Display Limitations*

More than 120 files can be saved by the ERC into a single subdirectory, but the ERC will only be able to recognize and load the first 120 files within a directory on the personal computer (PC). If you have more than 120 files, separate subdirectories must be created with no more than 120 files in each subdirectory.

4.2 *Formatting Disks*

The FORMAT function on the ERC controller will not work with the FDE for Windows program. This is to protect the hard drive from being formatted by accident and because of the various PC floppy diskette format configurations. All diskettes must be formatted from the PC using DOS or Windows.

4.3 *Jobs*

Jobs should be saved to the PC on a regular basis. A twice-monthly backup system is recommended. This will ensure that a recent copy is on hand if a job on the ERC has been deleted, corrupted, or inadvertently changed.

It is possible to save all jobs on the ERC to disk (see Section 4.3.1), save selected jobs on the ERC to disk (see Section 4.3.2), or load jobs from disk to the ERC (see Section 4.3.3).

4.3.1 Saving All Jobs

To save all jobs from the ERC to disk, proceed as follows:

NOTE: If the disk has insufficient space available or is write protected, an error will be displayed on the ERC screen.

1. Press OP1.
2. Press FLOPPY.
3. Press SAVE. A directory of files will appear on the screen.
4. Press ALL JOB.
5. Press EXECUTE.
6. Press BATCH.
7. Press EXECUTE.

The selected information will now be transferred to the PC in the drive and directory path specified in the target directory in the FDE Configuration screen.

4.3.2 Saving Selected Jobs

To save selected jobs from the ERC to disk, proceed as follows:

NOTE:

- *The ERC will not overwrite a file that already exists on the disk unless you have OVERWRITE selected in the FDE Configuration screen. Attempting to save a job that is already on disk will generate an error message.*

- *If the disk has insufficient space available or is write protected, an error will be displayed on the ERC screen.*

1. Press OP1.
2. Press FLOPPY.
3. Press SAVE. A directory of files will appear on the screen.
4. Press SELECT JOB.
5. Move the cursor to the file to be saved.
6. Press SELECT. An asterisk (*) will appear next to the file selected.

NOTE: If a mistake was made in tagging a job that is not to be transferred, move the cursor to the job and press SELECT. This will untag the job.

7. Repeat Steps 5 and 6 as necessary.
8. Press EXIT.
9. Press EXECUTE.

The selected information will now be transferred to the PC in the drive and directory path specified in the FDE Configuration screen.

4.3.3 Loading Jobs

To load jobs from the PC to the ERC, proceed as follows:



DANGER!

Do not load data, parameters, or concurrent I/O files from one robot to another without checking operation in Teach or Slow mode. Concurrent I/O and parameter changes can change the way a robot operates. Unexpected operation can cause serious injury or death.

NOTE:

- If a job on the ERC has the same name as a job to be copied from the PC, the job on the ERC must be renamed or deleted before the job can be copied from the PC to the ERC.
- Due to memory display limitations on the ERC, a maximum limit of 120 files will be accessible by the ERC (see Section 4.1).

1. Press OP1.
2. Press FLOPPY.
3. Press LOAD. A directory of files will appear on the screen.
4. Press SELECT JOB.
5. Move the cursor to the file to be loaded.
6. Press SELECT. An asterisk (*) will appear next to the file selected.

NOTE:

If a mistake was made in tagging a job that is not to be transferred, move the cursor to the job and press SELECT. This will untag the job.

7. Repeat Steps 5 and 6 as necessary.
8. Press EXIT.
9. Press EXECUTE. The selected information will now be transferred to the ERC.

4.4 Conditional Program Data

Conditional program data files should be saved periodically and whenever a change has been made. Conditional program data files include weave conditions, welder settings, user coordinate frames, tool frames, and other necessary files.

It is possible to either save conditional program data from the ERC to disk (see Section 4.4.1) or load conditional program data from disk to the ERC (see Section 4.4.2).

4.4.1 Saving Conditional Program Data

To save conditional program data from the ERC to disk, proceed as follows:

NOTE:

- *The ERC will not overwrite a file that already exists on the disk unless you have OVERWRITE selected in the FDE Configuration screen. Attempting to save a job that is already on disk will generate an error.*
- *If the disk has insufficient space available or is write protected, an error will be displayed on the ERC screen.*
 1. Press OP1.
 2. Press FLOPPY.
 3. Move the cursor to CONDITIONAL PROGRAM DATA.
 4. Press SAVE.
 5. Move the cursor to file to be saved.
 6. Press EXECUTE.

The selected information will now be transferred to the PC in the drive and directory path specified in the FDE Configuration screen.

4.4.2 Loading Conditional Program Data

To load conditional program data files from the PC to the ERC, proceed as follows:



DANGER!

Do not load data, parameters, or concurrent I/O files from one robot to another without checking operation in Teach or Slow mode. Concurrent I/O and parameter changes can change the way a robot operates. Unexpected operation can cause serious injury or death.



CAUTION!

The FDE for Windows will overwrite the existing ERC file when loading conditional data files.

NOTE:

Due to memory display limitations on the ERC, a maximum limit of 120 files will be accessible by the ERC (see Section 4.1).

1. Press OP1.
2. Press FLOPPY.
3. Move the cursor to CONDITIONAL PROGRAM DATA.
4. Press LOAD.
5. Move the cursor to the file to be loaded to the ERC.
6. Press EXECUTE. The selected information will now be transferred to the ERC.

4.5 All User's Programs

All user's programs saves all user programs and files as a single hexadecimal batch file. Saving this file is not necessary if all jobs and conditional data files are saved on a regular basis.

4.6 Parameters

Parameters should be saved to a master disk on a regular basis or whenever they have been changed. The parameters include the soft limits, cubes, speeds, etc. It is possible to either save parameters from the ERC to disk (see Section 4.6.1) or load parameters from disk to the ERC (see Section 4.6.2).

4.6.1 Saving Parameters

To save parameters from the ERC to disk, proceed as follows:

NOTE:

- *The ERC will not overwrite a file that already exists on the disk unless you have OVERWRITE selected in the FDE Configuration screen. Attempting to save a job that is already on disk will generate an error.*
- *If the disk has insufficient space available or is write protected, an error will be displayed on the ERC screen.*
 1. Press OP1.
 2. Press FLOPPY.
 3. Move the cursor to PARAMETER.
 4. Press SAVE.
 5. Move the cursor to type of parameter to be saved.
 6. Press EXECUTE.

The selected information will now be transferred to the PC in the drive and directory path specified in the FDE Configuration screen.

4.6.2 Loading Parameters

To load parameters from the PC to the ERC, proceed as follows:



DANGER!

Do not load data, parameters, or concurrent I/O files from one robot to another without checking operation in Teach or Slow mode. Concurrent I/O and parameter changes can change the way a robot operates. Unexpected operation can cause serious injury or death.



CAUTION!

The FDE for Windows will overwrite the existing ERC file when loading conditional data files.

NOTE:

Due to memory display limitations on the ERC, a maximum limit of 120 files will be accessible by the ERC (see Section 4.1).

1. Press OP2.



DANGER!

Do not load data, parameters, or concurrent I/O files from one robot to another without checking operation in Teach or Slow mode. Concurrent I/O and parameter changes can change the way a robot operates. Unexpected operation can cause serious injury or death.

2. Enter 00000000 (eight zeros) or your code.

NOTE: *The default code for this operation is "00000000" (eight zeros), but if the default has been changed, only the user code will work.*

3. Press FLOPPY.
4. Move the cursor to PARAMETERS.
5. Press LOAD.
6. Move the cursor to type of parameter to be loaded into memory.
7. Press EXECUTE. The selected information will now be transferred to the ERC.

4.7 I/O System Data

I/O system data includes the concurrent I/O of the system, the signal names, the absolute data of the encoders, and other **very important** files. This data should be saved on a master disk on a regular basis or whenever it has been changed (after recalibrating encoders, for example).

It is possible to either save I/O system data from the ERC to disk (see Section 4.7.1) or load I/O system data from disk to the ERC (see Section 4.7.2).

4.7.1 Saving I/O System Data

To save I/O system data from the ERC to disk, proceed as follows:

NOTE:

- *The ERC will not overwrite a file that already exists on the disk unless you have OVERWRITE selected in the FDE Configuration screen. Attempting to save a job that is already on disk will generate an error.*

- *If the disk has insufficient space available or is write protected, an error will be displayed on the ERC screen.*

1. Press OP1.
2. Press FLOPPY.
3. Move the cursor to I/O System Data.
4. Press SAVE.
5. Move the cursor to file to be saved to disk.
6. Press EXECUTE.

The selected information will now be transferred to the PC in the drive and directory path specified in the FDE Configuration screen.

4.7.2 Loading I/O System Data

To load I/O system data from the PC to the ERC, proceed as follows:

**DANGER!**

Do not load data, parameters, or concurrent I/O files from one robot to another without checking operation in Teach or Slow mode. Concurrent I/O and parameter changes can change the way a robot operates. Unexpected operation can cause serious injury or death.

**CAUTION!**

The FDE for Windows will overwrite the existing ERC file when loading conditional data files.

NOTE: *Due to memory display limitations on the ERC, a maximum limit of 120 files will be accessible by the ERC (see Section 4.1).*

1. Press OP2.
2. Enter 00000000 (eight zeros) or your code.

NOTE: *The default code for this operation is "00000000" (eight zeros), but if the default has been changed, only the user code will work.*

3. Press FLOPPY.
4. Move the cursor to I/O SYSTEM DATA.
5. Press LOAD.
6. Move the cursor to file to be loaded into ERC.
7. Press EXECUTE. The selected information will now be transferred to the ERC.

4.8 All Data in CMOS

All data in CMOS is a large hexadecimal file that includes all the data in the system. It is normally only saved on a master disk when extensive changes have been made to the system. It is used as an emergency backup for major system failures.

It is possible to either save all data in CMOS from the ERC to disk (see Section 4.8.1) or load all data in CMOS from disk to the ERC (see Section 4.8.2).

4.8.1 Saving All Data in CMOS

To save all data in CMOS from the ERC to disk, proceed as follows:

- NOTE:**
- *The ERC will not overwrite a file that already exists on the disk unless you have OVERWRITE selected in the FDE Configuration screen. Attempting to save a job that is already on disk will generate an error.*
 - *If the disk has insufficient space available or is write protected, an error will be displayed on the ERC screen.*
1. Press OP1.
 2. Press FLOPPY.
 3. Move the cursor to ALL DATA IN CMOS.
 4. Press SAVE.

5. Press EXECUTE.

The selected information will now be transferred to the PC in the drive and directory path specified in the FDE Configuration screen.

4.8.2 Loading All Data in CMOS

To load all data in CMOS from the PC to the ERC, proceed as follows:



DANGER!

Do not load data, parameters, or concurrent I/O files from one robot to another without checking operation in Teach or Slow mode. Concurrent I/O and parameter changes can change the way a robot operates. Unexpected operation can cause serious injury or death.



CAUTION!

The FDE for Windows will overwrite the existing ERC file when loading conditional data files.

NOTE: Due to memory display limitations on the ERC, a maximum limit of 120 files will be accessible by the ERC (see Section 4.1).

1. Press OP1.
2. Press FLOPPY.
3. Move the cursor to ALL DATA IN CMOS.
4. Press LOAD.
5. Press EXECUTE. The selected information will now be transferred to the ERC.

4.9 Other FDE Features

Other FDE features include verifying jobs (see Section 4.9.1) or deleting files (see Section 4.9.2).

4.9.1 Verifying Jobs

The VERIFY key allows the operator to ensure that what was saved to disk is the same as what is in the ERC. This is a way of determining if the latest revision of a program has been saved. Because it is slow, this function is not normally used. The quickest way to determine if a job has been changed since last being saved to disk is to check the job list. The SAVED column will only be indicated if the program has not been changed since being saved to disk. To verify PC and ERC data, proceed as follows:

1. Press OP1.
2. Press FLOPPY.
3. Press VERIFY. A directory of files will appear on the screen.
4. Press SELECT JOB.
5. Move the cursor to the file to be verified.
6. Press SELECT. An asterisk (*) will appear next to the file selected.

7. Repeat Steps 5 and 6 as necessary.
8. Press EXIT.
9. Press EXECUTE. The selected information will now be verified.

NOTE: If any differences occur during the verification process, an error will be displayed on the ERC screen.

4.9.2 Deleting Files

The Delete function will delete files from the disk, not the ERC memory. You may wish to use DOS or Windows rather than the Delete function to delete files from the PC. To delete data on the PC, proceed as follows:



CAUTION!

Deleting a file is permanent and the file cannot be recovered if accidentally erased.

NOTE: If your jobs are on a floppy disk, make sure the floppy disk is not write protected.

1. Press OP1.
2. Press FLOPPY.
3. Press DELETE.

A directory of files will appear on the screen.

4. Press SELECT JOB.
5. Move the cursor to the file to be deleted.
6. Press SELECT.

An asterisk (*) will appear next to the file selected.

7. Repeat Steps 5 and 6 as necessary.
8. Press EXIT.
9. Press EXECUTE.

The selected files will now be deleted from the PC.

NOTES

SECTION 5

OPERATING FDE WITH AN MRC CONTROLLER

This section contains instructions for the operation of FDE for Windows Package (P/N 141460-1) with an MRC controller. Refer to the following sections for data transfer procedures:

- Jobs (Section 5.4)
- Conditional Files / Universal Data (Section 5.5)
- Batch Standard User Memory (Section 5.6)
- Parameters (Section 5.7)
- C. I/O Program /I/O Name (Section 5.8)
- Customer Data (Section 5.9)
- Batch Standard CMOS (Section 5.10)
- All CMOS Area (Section 5.11)
- Others (Section 5.12)

All data transfers must be initiated from the robot controller. All program functions are carried out on the control panel of the robot controller. The file transfer status can be viewed from the personal computer (PC). When information transfer is finished, close the communication port and select "Exit" from the configuration menu (or press Ctrl + X).

5.1 *Memory Display Limitations*

The MRC will only be able to see the first 230 files within a directory on the PC. If you have more than 230 files, separate directories must be created with no more than 230 files.

5.2 *Formatting Disks*

The FORMAT function on the MRC controller will not work with the FDE for Windows program. This is to protect the hard drive from being formatted by accident and because of the various PC floppy diskette format configurations. All diskettes must be formatted from the PC using DOS or Windows.

5.3 *Setting the Communications*

To set the MRC controller communications port settings (the FC1 settings), proceed as follows:

1. Press Customer.
2. Press More.
3. Press Org.
4. Press 00000000 (eight zeros) or your code.

NOTE: The default code for this operation is "00000000" (eight zeros), but if the default was changed, only the user code will work.

5. Press PRMTR.
6. Press More.
7. Press RS.
8. Change the communications to match the configuration set in the FDE for Windows package as follows:
 - For the connector on the control panel (DB25), set RS-0000 to 3 (the default is 3).
 - For the connector on the internal I/O rack (DB9), set RS-0001 to 3 (the default is 0).
 - Data bits: RS-0050 = 7 : 7 bits
8 : 8 bits (default)
 - Stop bits: RS-0051 = 0 : 1 bits (default)
1 : 1.5 bits
2 : 2 bits
 - Parity: RS-0052 = 0 : none
1 : odd
2 : even (default)
 - Baud rate: RS-0053 = 1 : 150
2 : 300
3 : 600
4 : 1200
5 : 2400
6 : 4800 (default)
7 : 9600
8 : 19200 (may result in communication errors)

5.4 Jobs

Jobs should be saved to the PC on a regular basis. A twice-monthly backup system is recommended. This will ensure that a recent copy is on hand if a job on the MRC has been deleted, corrupted, or inadvertently changed.

It is possible to save all jobs on the MRC to disk (see Section 5.4.1), save selected jobs on the MRC to disk (see Section 5.4.2), or load jobs from disk to the MRC (see Section 5.4.3).

5.4.1 Saving All Jobs

To save all jobs from the MRC to disk, proceed as follows:

NOTE: If the disk has insufficient space available or is write protected, an error will be displayed on the MRC screen.

1. Press FUNC.
2. Press FDD.
3. Press FC1.
4. Move the cursor to JOB.
5. Press SAVE.
6. Press BATCH.
7. Press EXECUTE.

The selected information will now be transferred to the PC in the drive and directory path specified in the FDE Configuration screen.

5.4.2 Saving Selected Jobs

To save selected jobs from the MRC to disk, proceed as follows:

NOTE:

- *The MRC will not overwrite a file that already exists on the disk unless you have OVERWRITE selected in the FDE Configuration screen. Attempting to save a job that is already on disk will generate an error.*
- *If the disk has insufficient space available or is write protected, an error will be displayed on the MRC screen.*

1. Press FUNC.
2. Press FDD.
3. Press FC1.
4. Move the cursor to JOB.
5. Press SAVE.
6. Move the cursor to the job to be saved.
7. Press EACH.

NOTE: If a mistake was made in tagging a job that is not to be transferred, move the cursor to the job and press EACH. This will untag the job.

8. Repeat Steps 6 and 7 until all files to be saved are tagged.
9. Press EXECUTE.

The selected information will now be transferred to the PC in the drive and directory path specified in the FDE Configuration screen.

5.4.3 Loading Jobs

To load jobs from the PC to the MRC, proceed as follows:



DANGER!

Do not load data, parameters, or concurrent I/O files from one robot to another without checking operation in Teach or Slow mode. Concurrent I/O and parameter changes can change the way a robot operates. Unexpected operation can cause serious injury or death.

NOTE:

- If a job on the MRC has the same name as a job to be copied from the PC, the job on the MRC must be renamed or deleted before the job can be copied from the PC to the MRC.
- Due to memory display limitations on the MRC, a maximum limit of 230 files will be accessible by the MRC (see Section 5.1).

1. Press FUNC.
2. Press FDD.
3. Press FC1.
4. Move the cursor to JOB.
5. Press LOAD.

The screen will show all the jobs on the disk.

6. If all the jobs on disk are to be loaded, press BATCH. If only a few jobs are to be loaded, move the cursor to the job and press EACH until all jobs to be loaded are tagged.

NOTE:

If a mistake was made in tagging a job that is not to be transferred, move the cursor to the job and press EACH. This will untag the job.

7. Press EXECUTE. The selected information will now be transferred to the MRC.

5.5 Conditional Files/Universal Data

Conditional files and universal data should be saved periodically and whenever a change has been made. Conditional files and universal data include weave conditions, welder settings, user coordinate frames, tool frames, and other necessary files.

It is possible to either save conditional files and universal data from the MRC to disk (see Section 5.5.1) or load conditional files and universal data from disk to the MRC (see Section 5.5.2).

5.5.1 Saving Conditional Files/Universal Data

To save conditional files and universal data from the MRC to disk, proceed as follows:

NOTE:

- *The MRC will not overwrite a file that already exists on the disk unless you have OVERWRITE selected in the FDE Configuration screen. Attempting to save a job that is already on disk will generate an error.*
- *If the disk has insufficient space available or is write protected, an error will be displayed on the MRC screen.*
 1. Press FUNC.
 2. Press FDD.
 3. Press FC1.
 4. Move the cursor to COND FILE.
 5. Press SAVE.
 6. If all the jobs on disk are to be loaded, press BATCH. If only a few jobs are to be loaded, move the cursor to the job and press EACH until all jobs to be loaded are tagged.

NOTE:

If a mistake was made in tagging a job that is not to be transferred, move the cursor to the job and press EACH. This will untag the job.

7. Press EXECUTE.

The selected information will now be transferred to the PC in the drive and directory path specified in the FDE Configuration screen.

5.5.2 Loading Conditional Files/Universal Data

To load conditional files and universal data from the PC to the MRC, proceed as follows:



DANGER!

Do not load data, parameters, or concurrent I/O files from one robot to another without checking operation in Teach or Slow mode. Concurrent I/O and parameter changes can change the way a robot operates. Unexpected operation can cause serious injury or death.



CAUTION!

The FDE for Windows will overwrite the existing MRC file when loading conditional data files.

NOTE:

- *If a job on the MRC has the same name as a job to be copied from the PC, the job on the MRC must be renamed or deleted before the job can be copied from the PC to the MRC.*
- *Due to memory display limitations on the MRC, a maximum limit of 230 files will be accessible by the MRC (see Section 5.1).*
 1. Press FUNC.



DANGER!

Do not load data, parameters, or concurrent I/O files from one robot to another without checking operation in Teach or Slow mode. Concurrent I/O and parameter changes can change the way a robot operates. Unexpected operation can cause serious injury or death.

2. Press FDD.
3. Press FC1.
4. Move the cursor to COND FILE.
5. Press LOAD.
6. If all the jobs on disk are to be loaded, press BATCH. If only a few jobs are to be loaded, move the cursor to the job and press EACH until all jobs to be loaded are tagged.

NOTE: If a mistake was made in tagging a job that is not to be transferred, move the cursor to the job and press EACH. This will untag the job.

7. Press EXECUTE.

The selected information will now be transferred to the MRC.

5.6 Batch Standard User Memory

This option saves batch standard user memory as a single hexadecimal batch file. Batch standard user memory includes user programs and files. Saving this file is not necessary if all jobs and conditional files and universal data are saved on a regular basis.

It is possible to either save batch standard user memory from the MRC to disk (see Section 5.6.1) or load batch standard user memory from disk to the MRC (see Section 5.6.2).

5.6.1 Saving Batch Standard User Memory

To save batch standard user memory from the MRC to disk, proceed as follows:

NOTE:

- *The MRC will not overwrite a file that already exists on the disk unless you have OVERWRITE selected in the FDE Configuration screen. Attempting to save a job that is already on disk will generate an error.*
- *If the disk has insufficient space available or is write protected, an error will be displayed on the MRC screen.*

1. Press FUNC.
2. Press FDD.
3. Press FC1.
4. Move the cursor to BATCH STD USER MEM.
5. Press SAVE.

6. Press EXECUTE.

The selected information will now be transferred to the PC in the drive and directory path specified in the FDE Configuration screen.

5.6.2 Loading Batch Standard User Memory

To load batch standard user memory from the PC to the MRC, proceed as follows:



DANGER!

Do not load data, parameters, or concurrent I/O files from one robot to another without checking operation in Teach or Slow mode. Concurrent I/O and parameter changes can change the way a robot operates. Unexpected operation can cause serious injury or death.



CAUTION!

The FDE for Windows will overwrite the existing MRC file when loading conditional data files.

NOTE:

Due to memory display limitations on the MRC, a maximum limit of 230 files will be accessible by the MRC (see Section 5.1).

1. Press FUNC.
2. Press FDD.
3. Press FC1.
4. Move the cursor to BATCH STD USER MEM.
5. Press LOAD.
6. Press EXECUTE. The selected information will now be transferred to the MRC.

5.7 Parameters

Parameters should be saved to a master disk on a regular basis or whenever they have been changed. The parameters include the soft limits, cubes, speeds, etc.

It is possible to either save parameters from the MRC to disk (see Section 5.7.1) or load parameters from disk to the MRC (see Section 5.7.2).

5.7.1 Saving Parameters

To save parameters from the MRC to disk, proceed as follows:

NOTE:

- *The MRC will not overwrite a file that already exists on the disk unless you have OVERWRITE selected in the FDE Configuration screen. Attempting to save a job that is already on disk will generate an error.*
 - *If the disk has insufficient space available or is write protected, an error will be displayed on the MRC screen.*
1. Press FUNC.
 2. Press FDD.

3. Press FC1.
4. Move the cursor to PARAMETER.
5. Press SAVE.
6. If all the jobs on disk are to be loaded, press BATCH. If only a few jobs are to be loaded, move the cursor to the job and press EACH until all jobs to be loaded are tagged.

NOTE: If a mistake was made in tagging a job that is not to be transferred, move the cursor to the job and press EACH. This will untag the job.

7. Press EXECUTE.

The selected information will now be transferred to the PC in the drive and directory path specified in the FDE Configuration screen.

5.7.2 Loading Parameters

To load parameters from the PC to the MRC, proceed as follows:



DANGER!

Do not load data, parameters, or concurrent I/O files from one robot to another without checking operation in Teach or Slow mode. Concurrent I/O and parameter changes can change the way a robot operates. Unexpected operation can cause serious injury or death.



CAUTION!

The FDE for Windows will overwrite the existing MRC file when loading conditional data files.

NOTE: Due to memory display limitations on the MRC, a maximum limit of 230 files will be accessible by the MRC (see Section 5.1).

1. Press CUSTOMER.
2. Press MORE.
3. Press ORG.
4. Enter 00000000 (eight zeros) or your code.

NOTE: The default code for this operation is "00000000" (eight zeros), but if the default has been changed, only the user code will work.

5. Press ENTER.
6. Press MORE.
7. Press FDD.
8. Press FC1.
9. Move the cursor to PARAMETERS.
10. Press LOAD.

11. If all the jobs on disk are to be loaded, press BATCH. If only a few jobs are to be loaded, move the cursor to the job and press EACH until all jobs to be loaded are tagged.

NOTE: If a mistake was made in tagging a job that is not to be transferred, move the cursor to the job and press EACH. This will untag the job.

12. Press EXECUTE. The selected information will now be transferred to the MRC.

5.8 **C. I/O Program/I/O Name**

This option includes the concurrent I/O program of the system, the signal names, the absolute data of the encoders, and other **very important** files. The option for concurrent I/O program data in the MRC display is abbreviated "C. I/O Program/I/O Name." This data should be saved on a master disk on a regular basis or whenever it has been changed (after recalibrating encoders, for example).

It is possible to either save concurrent I/O program data from the MRC to disk (see Section 5.8.1) or load concurrent I/O program data from disk to the MRC (see Section 5.8.2).

5.8.1 **Saving C. I/O Program/I/O Name**

To save concurrent I/O program data from the MRC to disk, proceed as follows:

NOTE:

- *The MRC will not overwrite a file that already exists on the disk unless you have OVERWRITE selected in the FDE Configuration screen. Attempting to save a job that is already on disk will generate an error.*

- *If the disk has insufficient space available or is write protected, an error will be displayed on the MRC screen.*

1. Press FUNC.
2. Press FDD.
3. Press FC1.
4. Move the cursor to C. I/O PROGRAMS.
5. Press SAVE.
6. If all the jobs on disk are to be loaded, press BATCH. If only a few jobs are to be loaded, move the cursor to the job and press EACH until all jobs to be loaded are tagged.

NOTE: If a mistake was made in tagging a job that is not to be transferred, move the cursor to the job and press EACH. This will untag the job.

7. Press EXECUTE.

The selected information will now be transferred to the PC in the drive and directory path specified in the FDE Configuration screen.

5.8.2 Loading C. I/O Program/I/O Name

To load concurrent I/O program data from the PC to the MRC, proceed as follows:



DANGER!

Do not load data, parameters, or concurrent I/O files from one robot to another without checking operation in Teach or Slow mode. Concurrent I/O and parameter changes can change the way a robot operates. Unexpected operation can cause serious injury or death.



CAUTION!

The FDE for Windows will overwrite the existing MRC file when loading conditional data files.

NOTE: Due to memory display limitations on the MRC, a maximum limit of 230 files will be accessible by the MRC (see Section 5.1).

1. Press CUSTOMER.
2. Press MORE.
3. Press ORG.
4. Enter 00000000 (eight zeros) or your code.

NOTE: The default code for this operation is "00000000" (eight zeros), but if the default has been changed, only the user code will work.

5. Press ENTER.
6. Press MORE.
7. Press FDD.
8. Press FC1.
9. Move the cursor to DATA TYPE.
10. Press LOAD.
11. If all the jobs on disk are to be loaded, press BATCH. If only a few jobs are to be loaded, move the cursor to the job and press EACH until all jobs to be loaded are tagged.

NOTE: If a mistake was made in tagging a job that is not to be transferred, move the cursor to the job and press EACH. This will untag the job.

12. Press EXECUTE. The selected information will now be transferred to the MRC.

5.9 Customer Data

Customer data includes absolute data, specified point, alarm histories, and other very important files. Customer data should be saved on a master disk and whenever it has been changed (after encoder calibration, for example).

It is possible to either save customer data from the MRC to disk (see Section 5.9.1) or load customer data from disk to the MRC (see Section 5.9.2).

5.9.1 Saving Customer Data

To save customer data from the MRC to disk, proceed as follows:

NOTE:

- *The MRC will not overwrite a file that already exists on the disk unless you have OVERWRITE selected in the FDE Configuration screen. Attempting to save a job that is already on disk will generate an error.*

- *If the disk has insufficient space available or is write protected, an error will be displayed on the MRC screen.*

1. Press FUNC.
2. Press FDD.
3. Press FC1.
4. Move the cursor to CUST DATA.
5. Press SAVE.
6. If all the jobs on disk are to be loaded, press BATCH. If only a few jobs are to be loaded, move the cursor to the job and press EACH until all jobs to be loaded are tagged.

NOTE:

If a mistake was made in tagging a job that is not to be transferred, move the cursor to the job and press EACH. This will untag the job.

7. Press EXECUTE.

The selected information will now be transferred to the PC in the drive and directory path specified in the FDE Configuration screen.

5.9.2 Loading Customer Data

To load customer data from the PC to the MRC, proceed as follows:



DANGER!

Do not load data, parameters, or concurrent I/O files from one robot to another without checking operation in Teach or Slow mode. Concurrent I/O and parameter changes can change the way a robot operates. Unexpected operation can cause serious injury or death.



CAUTION!

The FDE for Windows will overwrite the existing MRC file when loading conditional data files.

NOTE: Due to memory display limitations on the MRC, a maximum limit of 230 files will be accessible by the MRC (see Section 5.1).

1. Press CUSTOMER.
2. Press MORE.
3. Press ORG.
4. Enter 00000000 (eight zeros) or your code.

NOTE: The default code for this operation is "00000000" (eight zeros), but if the default has been changed, only the user code will work.

5. Press ENTER.
6. Press MORE.
7. Press FDD.
8. Press FC1.
9. Move the cursor to CUST DATA.
10. Press LOAD.
11. If all the jobs on disk are to be loaded, press BATCH. If only a few jobs are to be loaded, move the cursor to the job and press EACH until all jobs to be loaded are tagged.

NOTE: If a mistake was made in tagging a job that is not to be transferred, move the cursor to the job and press EACH. This will untag the job.

12. Press EXECUTE.

The selected information will now be transferred to the MRC.

5.10 Batch Standard CMOS

Batch standard CMOS is a large hexadecimal file that includes all the batch data in the system. It is normally only saved on a master disk when extensive changes have been made to the system. It is used as an emergency backup for major system failures.

It is possible to either save batch standard CMOS from the MRC to disk (see Section 5.10.1) or load batch standard CMOS from disk to the MRC (see Section 5.10.2).

5.10.1 Saving Batch Standard CMOS

To save batch standard CMOS from the XRC to disk, proceed as follows:

NOTE:

- *The MRC will not overwrite a file that already exists on the disk unless you have OVERWRITE selected in the FDE Configuration screen. Attempting to save a job that is already on disk will generate an error.*
- *If the disk has insufficient space available or is write protected, an error will be displayed on the XRC screen.*
 1. Press FUNC.
 2. Press FDD.
 3. Press FC1.
 4. Move the cursor to BATCH STD CMOS.
 5. Press SAVE.
 6. Press EXECUTE.

The selected information will now be transferred to the PC in the drive and directory path specified in the FDE Configuration screen.

5.10.2 Loading Batch Standard CMOS

To load batch standard CMOS from the PC to the MRC, proceed as follows:



DANGER!

Do not load data, parameters, or concurrent I/O files from one robot to another without checking operation in Teach or Slow mode. Concurrent I/O and parameter changes can change the way a robot operates. Unexpected operation can cause serious injury or death.



CAUTION!

The FDE for Windows will overwrite the existing XRC file when loading conditional data files.

NOTE:

Due to memory display limitations on the MRC, a maximum limit of 230 files will be accessible by the MRC (see Section 6.1).

1. Press CUSTOMER.
2. Press MOVE.

3. Press ORG.
4. Enter 00000000 (8 zeros) or your code.

NOTE: The default code for this operation is "00000000" (eight zeros), but if the default has been changed, only the user code will work.

5. Press ENTER.
6. Press MORE.
7. Press FDD.
8. Press FC1.
9. Move the cursor to BATCH STD CMOS.
10. Press LOAD.
11. Press EXECUTE. The selected information will now be transferred to the MRC.

5.11 All CMOS Area

All CMOS area is a large hexadecimal file that includes all the data (including the batch data) in the system. It is normally only saved on a master disk when extensive changes have been made to the system. It is used as an emergency backup for major system failures.

It is possible to either save all CMOS area from the MRC to disk (see Section 5.11.1) or load all CMOS area from disk to the MRC (see Section 5.11.2).

5.11.1 Saving All CMOS Area

To save all CMOS area from the MRC to disk, proceed as follows:

NOTE:

- *The XRC will not overwrite a file that already exists on the disk unless you have OVERWRITE selected in the FDE Configuration screen. Attempting to save a job that is already on disk will generate an error.*
- *If the disk has insufficient space available or is write protected, an error will be displayed on the MRC screen.*

1. Press FUNC.
2. Press FDD.
3. Press FC1.
4. Move the cursor to ALL CMOS AREA.
5. Press SAVE.
6. Press EXECUTE.

The selected information will now be transferred to the PC in the drive and directory path specified in the FDE Configuration screen.

5.11.2 Loading All CMOS Area

To load all CMOS area from the PC to the MRC, proceed as follows:



DANGER!

Do not load data, parameters, or concurrent I/O files from one robot to another without checking operation in Teach or Slow mode. Concurrent I/O and parameter changes can change the way a robot operates. Unexpected operation can cause serious injury or death.



CAUTION!

The FDE for Windows will overwrite the existing MRC file when loading conditional data files.

NOTE: Due to memory display limitations on the MRC, a maximum limit of 230 files will be accessible by the MRC (see Section 5.1).

1. Press CUSTOMER.
2. Press MOVE.
3. Press ORG.
4. Enter 00000000 (8 zeros) or your code.

NOTE: The default code for this operation is "00000000" (eight zeros), but if the default has been changed, only the user code will work.

5. Press ENTER.
6. Press MORE.
7. Press FDD.
8. Press FC1.
9. Move the cursor to ALL CMOS AREA.
10. Press LOAD.
11. Press EXECUTE. The selected information will now be transferred to the MRC.

5.12 Other FDE Features

Other FDE features include verifying jobs (see Section 5.12.1) or deleting files (see Section 5.12.2).

5.12.1 Verifying Jobs

The VERIFY key allows the operator to ensure that what was saved to disk is the same as what is in the MRC. This is a way of determining if the latest revision of a program has been saved. Because it is slow, this function is not normally used. The quickest way to determine if a job has been changed since last being saved to disk is to check the job list. The SAVED column will only be indicated if the program has not been changed since being saved to disk. To verify PC and MRC data, proceed as follows:

1. Press FUNC.
2. Press FDD.
3. Press FC1.
4. Move the cursor to type of data to be verified.
5. Press VERIFY. The screen will show all the jobs on the disk.
6. If all the jobs on disk are to be loaded, press BATCH. If only a few jobs are to be loaded, move the cursor to the job and press EACH until all jobs to be loaded are tagged.

NOTE: If a mistake was made in tagging a job that is not to be transferred, move the cursor to the job and press EACH. This will untag the job.

7. Press EXECUTE. The selected information will now be verified.

NOTE: If any differences occur during the verification process, an error will be displayed on the MRC screen.

5.12.2 Deleting Files



CAUTION!

- **Deleting a file is permanent and the file cannot be recovered if accidentally erased.**
- **The Delete function will delete files from the disk, not the MRC memory. You may wish to use DOS or Windows rather than the Delete function to delete files from the PC.**

To delete data on the PC, proceed as follows:

NOTE: If your jobs are on a floppy disk, make sure the floppy disk is not write protected. Refer to Section 1.5.

1. Press FUNC.
2. Press FDD.
3. Press FC1.
4. Move the cursor to type of data to be deleted.

5. Press DELETE. The screen will show all the files of the specified data type on the disk.
6. If all the jobs on disk are to be deleted, press BATCH. If only a few jobs are to be deleted, move the cursor to the job and press EACH until all jobs to be deleted are tagged.

NOTE: If a mistake was made in tagging a job that is not to be transferred, move the cursor to the job and press EACH. This will untag the job.

- 6 Press EXECUTE. The selected files will now be deleted from the PC.

SECTION 6

OPERATING FDE WITH AN XRC CONTROLLER

This section contains instructions for the operation of FDE for Windows (P/N 141460-1) with an XRC controller. Refer to the following sections for data transfer procedures:

- Jobs (Section 6.4)
- Condition Files / General Data (Section 6.5)
- Batch User Memory (Section 6.6)
- Parameters (Section 6.7)
- C. I/O Program / I/O Name (Section 6.8)
- System Data (Section 6.9)
- Batch CMOS (Section 6.10)
- Others (Section 6.12)

NOTE: All data transfers must be initiated from the robot controller. All program functions are carried out on the control panel of the robot controller. The file transfer status can be viewed from the personal computer (PC). When information transfer is finished, close the computer's comm port and select "Exit" from the configuration menu (or press Ctrl + X).

6.1 Job Display Limitations

The XRC will only be able to see the first 230 files within a directory on the PC. If you have more than 230 files, then separate directories must be created with no more than 230 files in each.

6.2 Formatting Disks

The FORMAT function on the XRC controller will not work with the FDE for Windows program. This is to protect the hard drive from being formatted by accident and because of the various PC floppy diskette format configurations. All diskettes must be formatted from the PC using DOS or Windows.

6.3 Configuring XRC for FDE/WIN Operations

To set up the XRC Controller serial communication port, for FC1 protocol, or to communicate using FDE/WIN, proceed as follows:

6.3.1 Selecting Serial Communications Port

NOTE: Only one serial connector can be configured and operate for FC1 Protocol (FDE for Windows communication).

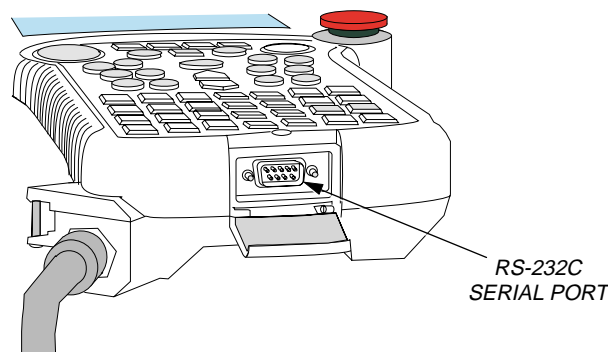
NOTE: Using (or toggling) the FD/PC "Device" Menu item automatically changes the RS003 transmission Parameter setting.

If using the XCP01 System Control Board's Communications port: RS000 = 3

: RS003 = 1

If using the Programming Pendant Serial Communications Port : RS000 = 2

: RS003 = 1



On the programming pendant press the following keys:

Press "TOP MENU" key

1. Press the AREA Key until the back lighted cursor is in the Menu Line.
2. Cursor Key to SECURITY.
3. Cursor Key to MANAGEMENT MODE. Press the SELECT Key.
4. Enter 99999999 (eight nines) or your code using the programming pendant digit-keypad.

NOTE: The default code for this operation is "99999999" (eight nines), but if the default was changed, only the user code will work.

5. Cursor to PRMTR. Press Select.
6. Cursor to RS. Press Select.
7. Change the communications to match the configuration set in the FDE for Windows package as follows:
 - For the Serial Communications port located on the XRC Programming Pendant (DB9 connector), set RS-000 to the value of 2. Then set up the Device for FC1 Protocol by setting RS-003 to a value of 1.

- For the Serial Communications port located on the XRC CPU Rack, XCP01 MODULE, (DB9 Connector), Set RS-000 to a value of 3. Then set up the Device for FC1 Protocol by setting RS-003 to a value of 1.

6.3.2 Serial Communications Protocol Configuring

The XRC is configured to communicate using FC1 protocol for operations with the FDE/WIN software product. If you need to modify your XRC serial communications port to operate Motoweld, Ethernet, MNET, Vision, or other software, refer to the RS- (transmissions parameters) YASKAWA Manual: HC9401046.

[FC1 Protocol Transmission Parameters]

- Data bits: RS-0050 = 7 : 7 bits
8 : 8 bits (default)
- Stop bits: RS-0051 = 0 : 1 bits (default)
1 : 1.5 bits
2 : 2 bits
- Parity: RS-0052 = 0 : none
1 : odd
2 : even (default)
- Baud rate: RS-0053 = 1 : 150
2 : 300
3 : 600
4 : 1200
5 : 2400
6 : 4800 (default)
7 : 9600
8 : 19200 (may result in communication errors)

6.4 Jobs

Jobs should be saved to the PC on a regular basis. This will ensure that a recent copy is on hand if a job on the XRC has been deleted, corrupted, or inadvertently changed.

It is possible to save all job files on the XRC to disk (see Section 6.4.1), save selected jobs on the XRC to disk (see Section 6.4.2), or load jobs from disk to the XRC (see Section 6.4.3).

6.4.1 Saving All Jobs

To save all jobs to disk, first open the jobs directory in the FDE program on the PC. To save all jobs, proceed as follows:

NOTE: If the disk has insufficient space available or is write protected, an error will be displayed on the MRC screen.

1. Cursor to FD/PC. Press Select.
2. Cursor to SAVE. Press Select.
3. Cursor to JOB. Press Select twice.
4. Press the AREA key to go to the menu area of the display. Cursor to Edit, make sure Select All is highlighted in the dropdown menu, and press Select. An asterisk will appear next to all the jobs.
5. Press ENTER.
6. At the SAVE prompt, cursor to YES and press Select.

The selected information will now be transferred to the PC in the drive and directory path specified in the FDE Configuration screen.

6.4.2 Saving Selected Jobs

To save selected jobs from the XRC to disk, first open the jobs directory in the FDE program on the PC. To save selected jobs, proceed as follows:

NOTE:

- *The XRC will not overwrite a file that already exists on the disk unless you have OVERWRITE selected in the FDE Configuration screen. Attempting to save a job that is already on disk will generate an error.*
- *If the disk has insufficient space available or is write protected, an error will be displayed on the XRC screen.*

1. Cursor to FD/PC. Press Select.
2. Cursor to SAVE. Press Select.
3. Cursor to JOB. Press Select twice.
4. Cursor to the job and press Select. An asterisk will appear next to the selected job. Repeat this step until all desired jobs are selected.

NOTE: If you make a mistake and tag a job that is not to be transferred, move the cursor to the job and press Select. This will untag the job.

5. Press ENTER.
6. At the SAVE prompt, cursor to YES and press Select.

The selected information will now be transferred to the PC in the drive and directory path specified in the FDE Configuration screen.

6.4.3 Loading Jobs

To load jobs from the PC to the XRC, proceed as follows:



DANGER!

Do not load data, parameters, or concurrent I/O files from one robot to another without checking operation in Teach or Slow mode. Concurrent I/O and parameter changes can change the way a robot operates. Unexpected operation can cause serious injury or death.

NOTE:

- If a job on the XRC has the same name as a job to be copied from the PC, the job on the XRC must be renamed or deleted before the job can be copied from the PC to the XRC.
- Due to memory display limitations on the XRC, a maximum limit of 230 files will be accessible by the XRC (see Section 5.1).
 1. Cursor to FD/PC. Press Select.
 2. Cursor to LOAD. Press Select.
 3. Cursor to JOB. Press Select twice.
 4. Cursor to the job to be transferred and press Select. An asterisk will appear next to the selected job. Repeat this step until all desired jobs are selected.

NOTE:

If you make a mistake and tag a job that is not to be transferred, move the cursor to the job and press Select. This will untag the job.

5. Press ENTER.
6. At the LOAD prompt, cursor to YES and press Select.

6.5 Condition Files/General Data

Condition files and general data should be saved periodically and whenever a change has been made. Condition files and general data include weave conditions, welder settings, user coordinate frames, tool frames, and other necessary files.

It is possible to either save condition files and general data from the XRC to disk (see Section 6.5.1) or load condition files and general data from disk to the XRC (see Section 6.5.2).

6.5.1 Saving Condition Files/General Data

To save condition files and general data from the XRC to disk, proceed as follows:

NOTE:

- *The XRC will not overwrite a file that already exists on the disk unless you have OVERWRITE selected in the FDE Configuration screen. Attempting to save a job that is already on disk will generate an error.*
- *If the disk has insufficient space available or is write protected, an error will be displayed on the XRC screen.*
 1. Cursor to FD/PC. Press Select.
 2. Cursor to SAVE. Press Select.
 3. Cursor to FILE/GENERAL DATA. Press Select twice.
 4. Cursor to the files to be transferred and press Select. An asterisk will appear next to the selected file. Repeat this step until all desired files are selected.

NOTE:

If you make a mistake and tag a file that is not to be transferred, move the cursor to the file and press Select. This will untag the file.

5. Press ENTER.
6. At the SAVE prompt, cursor to YES and press Select.

The selected information will now be transferred to the PC in the drive and directory path specified in the FDE Configuration screen.

6.5.2 Loading Condition Files/General Data

To load condition files and general data from the PC to the XRC, proceed as follows:



DANGER!

Do not load data, parameters, or concurrent I/O files from one robot to another without checking operation in Teach or Slow mode. Concurrent I/O and parameter changes can change the way a robot operates. Unexpected operation can cause serious injury or death.



CAUTION!

The FDE for Windows will overwrite the existing XRC file when loading condition data files.

NOTE:

- *If a file on the XRC has the same name as a file to be copied from the PC, the file on the XRC must be renamed or deleted before the file can be copied from the PC to the XRC.*
- *Due to memory display limitations on the XRC, a maximum limit of 230 files will be accessible by the XRC (see Section 6.1).*
 1. Cursor to FD/PC. Press Select.
 2. Cursor to LOAD. Press Select.
 3. Cursor to FILE/GENERAL DATA. Press Select twice.

4. Cursor to the file to be transferred and press Select. An asterisk will appear next to the selected file. Repeat this step until all desired files are selected.

NOTE:

If you make a mistake and tag a file that is not to be transferred, move the cursor to the file and press Select. This will untag the file.

5. Press ENTER.
6. At the LOAD prompt, cursor to YES and press Select.

The selected information will now be transferred to the XRC.

6.6 Batch User Memory

This option saves batch user memory as a single hexadecimal batch file. Batch user memory includes user programs and files. Saving this file is not necessary if all jobs and conditional files and general data are saved on a regular basis.

It is possible to either save batch user memory from the XRC to disk (see Section 6.6.1) or load batch user memory from disk to the XRC (see Section 6.6.2).

6.6.1 Saving Batch User Memory

To save batch user memory from the XRC to disk, proceed as follows:

NOTE:

- *The XRC will not overwrite a file that already exists on the disk unless you have OVERWRITE selected in the FDE Configuration screen. Attempting to save a job that is already on disk will generate an error.*
- *If the disk has insufficient space available or is write protected, an error will be displayed on the XRC screen.*

1. Cursor to FD/PC. Press Select.
2. Cursor to SAVE. Press Select.
3. Cursor to BATCH USER MEMORY.
4. Press SELECT.
5. At the SAVE prompt, cursor to YES and press Select.

The selected information will now be transferred to the PC in the drive and directory path specified in the FDE Configuration screen.

6.6.2 Loading Batch User Memory

To load batch user memory from the PC to the XRC, proceed as follows:



DANGER!

Do not load data, parameters, or concurrent I/O files from one robot to another without checking operation in Teach or Slow mode. Concurrent I/O and parameter changes can change the way a robot operates. Unexpected operation can cause serious injury or death.



CAUTION!

The FDE for Windows will overwrite the existing XRC file when loading conditional data files.

NOTE: Due to memory display limitations on the XRC, a maximum limit of 230 files will be accessible by the XRC (see Section 6.1).

1. Cursor to FD/PC. Press Select.
2. Cursor to LOAD. Press Select.
3. Cursor to BATCH USER MEMORY.
4. Press SELECT.
5. At the LOAD prompt, cursor to YES and press Select.

6.7 Parameters

Parameters should be saved to a master disk on a regular basis or whenever they have been changed. The parameters include the soft limits, cubes, speeds, etc.

It is possible to either save parameters from the XRC to disk (see Section 6.7.1) or load parameters from disk to the XRC (see Section 6.7.2).

6.7.1 Saving Parameters

To save parameters from the XRC to disk, proceed as follows:

- NOTE:*
- *The XRC will not overwrite a file that already exists on the disk unless you have OVERWRITE selected in the FDE Configuration screen. Attempting to save a file that is already on disk will generate an error.*
 - *If the disk has insufficient space available or is write protected, an error will be displayed on the XRC screen.*
1. Cursor to FD/PC. Press Select.
 2. Cursor to SAVE. Press Select.
 3. Cursor to PARAMETER. Press Select twice.
 4. Press the AREA key to go to the menu area of the display. Cursor to edit, make sure Select All is highlighted in the dropdown menu, and press Select. An asterisk will appear next to all the parameters. Or if you only want to save specific parameters, cursor to that parameter and press Select.

NOTE: *If you make a mistake and tag a parameter that is not to be transferred, move the cursor to the parameter and press Select. This will untag it.*

5. Press ENTER.
6. At the SAVE prompt, cursor to YES and press Select.

The selected information will now be transferred to the PC in the drive and directory path specified in the FDE Configuration screen.

6.7.2 Loading Parameters

To load parameters from the PC to the XRC, proceed as follows:



DANGER!

Do not load data, parameters, or concurrent I/O files from one robot to another without checking operation in Teach or Slow mode. Concurrent I/O and parameter changes can change the way a robot operates. Unexpected operation can cause serious injury or death.



CAUTION!

The FDE for Windows will overwrite the existing XRC file when loading conditional data files.

NOTE: *Due to memory display limitations on the XRC, a maximum limit of 230 files will be accessible by the XRC (see Section 6.1).*

1. Press the AREA key.
2. Cursor to SECURITY.
3. Cursor to MANAGEMENT MODE. Press SELECT.
4. Enter 99999999 (eight nines) or your code.

NOTE: *The default code for this operation is "99999999" (eight nines), but if the default was changed, only the user code will work.*

5. Cursor to FD/PC. Press Select.
6. Cursor to LOAD. Press Select.
7. Cursor to PARAMETER. Press Select twice.
8. Press the AREA key to go to the menu area of the display. Cursor to edit, make sure Select All is highlighted in the dropdown menu, and press Select. An asterisk will appear next to all the parameters. Or if you only want to save specific parameters, cursor to that parameter and press Select.

NOTE: *If you make a mistake and tag a parameter that is not to be transferred, move the cursor to the parameter and press Select. This will untag it.*

9. Press Select.
 10. At the LOAD prompt, cursor to YES and press Select.
- The selected information will now be transferred to the XRC.

6.8 C. I/O Program/I/O Name

This option includes the concurrent I/O program of the system, the signal names, the absolute data of the encoders, and other **very important** files. The option for concurrent I/O program data in the XRC display is abbreviated "C. I/O Program/I/O Name." This data should be saved on a master disk on a regular basis or whenever it has been changed (after recalibrating encoders, for example).

It is possible to either save concurrent I/O program data from the XRC to disk (see Section 6.8.1) or load concurrent I/O program data from disk to the XRC (see Section 6.8.2).

6.8.1 Saving C. I/O Program/I/O Name

To save concurrent I/O program data from the XRC to disk, proceed as follows:

NOTE:

- *The XRC will not overwrite a file that already exists on the disk unless you have OVERWRITE selected in the FDE Configuration screen. Attempting to save program data that is already on disk will generate an error.*

- *If the disk has insufficient space available or is write protected, an error will be displayed on the XRC screen.*

1. Cursor to FD/PC. Press Select.
2. Cursor to SAVE. Press Select.
3. Cursor to C.I/O PROGRAM. Press Select twice.
4. A menu appears. Cursor to C.I/O PROGRAM or I/O NAME DATA. Press Select.
5. Press the AREA key to go to the menu area of the display. Cursor to edit, make sure Select All is highlighted in the dropdown menu, and press Select. An asterisk will appear next to all the data files. Or if you only want to save specific files, cursor to that file and press Select.

NOTE:

If you make a mistake and tag program data that is not to be transferred, move the cursor to the file and press Select. This will untag it.

6. Press ENTER.
7. At the SAVE prompt, cursor to YES and press Select.

6.8.2 Loading C. I/O Program/I/O Name

To load concurrent I/O program data from the PC to the XRC, proceed as follows:



DANGER!

Do not load data, parameters, or concurrent I/O files from one robot to another without checking operation in Teach or Slow mode. Concurrent I/O and parameter changes can change the way a robot operates. Unexpected operation can cause serious injury or death.



CAUTION!

The FDE for Windows will overwrite the existing XRC file when loading conditional data files.

NOTE: *Due to memory display limitations on the XRC, a maximum limit of 230 files will be accessible by the XRC (see Section 6.1).*

1. Press the AREA key.
2. Cursor to SECURITY.
3. Cursor to MANAGEMENT MODE. Press SELECT.
4. Enter 99999999 (eight nines) or your code.

NOTE: *The default code for this operation is "99999999" (eight nines), but if the default was changed, only the user code will work.*

5. Cursor to FD/PC. Press Select.
6. Cursor to LOAD. Press Select.
7. Cursor to C.I/O PROGRAM. Press Select twice.
8. A menu appears. Cursor to C.I/O PROGRAM or I/O NAME DATA. Press Select.
9. Press the AREA key to go to the menu area of the display. Cursor to edit, make sure Select All is highlighted in the dropdown menu, and press Select. An asterisk will appear next to all the data files. Or if you only want to load specific files, cursor to that file and press Select.

NOTE: *If you make a mistake and tag program data that is not to be transferred, move the cursor to the data and press Select. This will untag it.*

10. Press ENTER.
11. At the LOAD prompt, cursor to YES and press Select.

6.9 System Data

System data includes absolute data, specified point, alarm histories, and other very important files. System data should be saved on a master disk and whenever it has been changed (after encoder calibration, for example).

It is possible to either save customer data from the XRC to disk (see Section 6.9.1) or load customer data from disk to the XRC (see Section 6.9.2).

6.9.1 Saving System Data

To save system data from the XRC to disk, proceed as follows:

NOTE:

- *The XRC will not overwrite a file that already exists on the disk unless you have OVERWRITE selected in the FDE Configuration screen. Attempting to save a job that is already on disk will generate an error.*
- *If the disk has insufficient space available or is write protected, an error will be displayed on the XRC screen.*

1. Cursor to FD/PC. Press Select.
2. Cursor to SAVE. Press Select.
3. Cursor to SYSTEM DATA. Press Select twice.
4. Press the AREA key to go to the menu area of the display. Cursor to edit, make sure Select All is highlighted in the dropdown menu, and press Select. An asterisk will appear next to all the data files. Or if you only want to save specific data, cursor to it and press Select.

NOTE:

If you make a mistake and tag system data that is not to be transferred, move the cursor to the data and press Select. This will untag it.

5. Press ENTER.
6. At the SAVE prompt, cursor to YES and press Select.

The selected information will now be transferred to the PC in the drive and directory path specified in the FDE Configuration screen.

6.9.2 Loading System Data

To load system data from the PC to the XRC, proceed as follows:



DANGER!

Do not load data, parameters, or concurrent I/O files from one robot to another without checking operation in Teach or Slow mode. Concurrent I/O and parameter changes can change the way a robot operates. Unexpected operation can cause serious injury or death.



CAUTION!

The FDE for Windows will overwrite the existing XRC file when loading conditional data files.

NOTE: Due to memory display limitations on the XRC, a maximum limit of 230 files will be accessible by the XRC (see Section 6.1).

1. Press the AREA key.
2. Cursor to SECURITY.
3. Cursor to MANAGEMENT MODE. Press SELECT.
4. Enter 99999999 (eight nines) or your code.

NOTE: The default code for this operation is "99999999" (eight nines), but if the default was changed, only the user code will work.

5. Cursor to FD/PC. Press Select.
6. Cursor to LOAD. Press Select.
7. Cursor to SYSTEM DATA. Press Select twice.
8. Press the AREA key to go to the menu area of the display. Cursor to edit, make sure Select All is highlighted in the dropdown menu, and press Select. An asterisk will appear next to all the parameters. Or if you only want to save specific data, cursor to it and press Select.

NOTE: If you make a mistake and tag system data that is not to be transferred, move the cursor to the data and press Select. This will untag it.

9. Press ENTER.
10. At the SAVE prompt, cursor to YES and press Select.

The selected information will now be transferred to the XRC.

6.10 Batch CMOS

Batch CMOS is a large hexadecimal file that includes all the batch data in the system. It is normally only saved on a master disk when extensive changes have been made to the system. It is used as an emergency backup for major system failures.

It is possible to either save batch CMOS from the XRC to disk (see Section 6.10.1) or load batch CMOS from disk to the XRC (see Section 6.10.2).

6.10.1 Saving Batch CMOS

To save batch CMOS from the XRC to disk, proceed as follows:

NOTE:

- *The XRC will not overwrite a file that already exists on the disk unless you have OVERWRITE selected in the FDE Configuration screen. Attempting to save a job that is already on disk will generate an error.*
- *If the disk has insufficient space available or is write protected, an error will be displayed on the XRC screen.*
 1. Cursor to FD/PC. Press Select.
 2. Cursor to LOAD. Press Select.
 3. Cursor to BATCH CMOS. Press Select twice.
 4. Press SELECT.
 5. At the SAVE prompt, cursor to YES and press Select.

The selected information will now be transferred to the PC in the drive and directory path specified in the FDE Configuration screen.

6.10.2 Loading Batch CMOS

To load batch CMOS from the PC to the XRC, proceed as follows:



DANGER!

Do not load data, parameters, or concurrent I/O files from one robot to another without checking operation in Teach or Slow mode. Concurrent I/O and parameter changes can change the way a robot operates. Unexpected operation can cause serious injury or death.



CAUTION!

The FDE for Windows will overwrite the existing XRC file when loading conditional data files.

NOTE:

Due to memory display limitations on the XRC, a maximum limit of 230 files will be accessible by the XRC (see Section 6.1).

1. Press the AREA key.
2. Cursor to SECURITY.
3. Cursor to MANAGEMENT MODE. Press SELECT.
4. Enter 99999999 (eight nines) or your code.

NOTE: The default code for this operation is "99999999" (eight nines), but if the default was changed, only the user code will work.

5. Cursor to FD/PC. Press Select.
 6. Cursor to LOAD. Press Select.
 7. Cursor to BATCH CMOS. Press Select twice.
 8. Press Select.
 9. At the SAVE prompt, cursor to YES and press Select.
- The selected information will now be transferred to the XRC.

6.11 Other FDE Features

Other FDE features include verifying jobs (see Section 6.12.1) or deleting files (see Section 6.12.2).

6.11.1 Verifying Jobs

The VERIFY key allows the operator to ensure that what was saved to disk is the same as what is in the XRC. This is a way of determining if the latest revision of a program has been saved. Because it is slow, this function is not normally used. The quickest way to determine if a job has been changed since last being saved to disk is to check the job list. The SAVED column will only be indicated if the program has not been changed since being saved to disk. To verify PC and XRC data, proceed as follows:

1. Cursor to FD/PC. Press Select.
2. Cursor to VERIFY. Press Select.
3. Cursor to JOB. Press Select twice.
4. Press the AREA key to go to the menu area of the display. Cursor to edit, make sure Select All is highlighted in the dropdown menu, and press Select. An asterisk will appear next to all the jobs.
5. Press ENTER.
6. At the SAVE prompt, cursor to YES and press Select.

NOTE: If any differences occur during the verification process, an error will be displayed on the XRC screen.

6.11.2 Deleting Files



CAUTION!

- **Deleting a file is permanent and the file cannot be recovered if accidentally erased.**
- **The Delete function will delete files from the disk, not the XRC memory. You may wish to use DOS or Windows rather than the Delete function to delete files from the PC.**

To delete data on the PC, proceed as follows:

NOTE: If your jobs are on a floppy disk, make sure the floppy disk is not write protected. Refer to Section 1.5.

1. Cursor to FD/PC. Press Select.
2. Cursor to DELETE. Press Select.
3. Cursor to JOB. Press Select twice.
4. Cursor to the job you want to delete and press Select. An asterisk will appear next to the selected file. Repeat this step until all desired jobs are selected. An asterisk will appear next to all the jobs.
5. Press ENTER.
5. At the DELETE prompt, cursor to YES and press Select.

NOTES

SECTION 7

TROUBLESHOOTING

If FDE for Windows is not installed or configured correctly, the controller will display an error or alarm on the screen. Some of the errors, causes, and corrective actions are displayed below.

See the appropriate Programming Manual for additional error codes.

Table 7-1 Troubleshooting (for ERC Controllers)

Alarm No.	Message	Cause	Remedy
2030	Duplicate job name.	The job already exists in the robot controller and you are trying to overwrite the file from FDE for Windows.	You cannot overwrite an existing file. To load a file from floppy disk into the robot controller, the duplicate file in the robot controller must be erased.
4010	Connect cable of floppy disk drive.	Cable is loose or not connected to the robot controller. The communication parameter (baud rate) has been changed.	Plug in the cable between the robot controller and the PC. Check and correct the communication parameters.
4020	Insert floppy disk.	There is no floppy disk in the floppy disk drive.	Insert a floppy disk or remove the floppy disk from the drive and reinsert.
4030	The floppy disk is protected from WRITE operation.	The floppy disk Write Protect window is open.	Ensure that the Write Protect window (the small square slide located on the lower left side of the disk) is closed and locked.
4050	The file already exists on the floppy disk.	The file is already on the floppy disk.	Erase the file on the floppy disk.
4096 4097	Transmission error with floppy disk drive.	The serial cable connection is bad. The cable came loose during transmission of files. Wrong communication settings.	Ensure that the RS-232C serial cable is secured at both ends. Ensure that the communication settings are correct. See Section 3.2.
4110	Syntax error.	The file has been corrupted by using the incorrect symbol for editing the command. For example, misspelling AWELD as WWELD.	Edit the file and correct the error. If the error cannot be found, delete the file and start over.

Table 7-1 Troubleshooting (for ERC Controllers) - continued

Alarm No.	Message	Cause	Remedy
4170	Format error.	The file format has been changed.	Check the file structure on an IBM-compatible computer. Correct error if noted. Do not attempt to load the file into the robot controller until the error is corrected. If it cannot be corrected, erase the file and start over.
4250	The file is not allowed to load.	You are trying to load a file such as a parameter data file from the OP1 FLOPPY menu.	If the file needs to be loaded, it is necessary to use the OP2 function menu.
	Problems recording to the floppy disk drive.	The ERC controller TAPE OUT switch is not set correctly. The cable is plugged in incorrectly.	Ensure that the cable ends are attached correctly to the controller and the PC. Ensure that all parameters are set correctly on the floppy disk recorder.

Table 7-2 Troubleshooting (for MRC Controllers)

Error No.	Message	Cause	Remedy
3010	Floppy disk drive cable not connected.	Cable connection error on floppy disk drive or power not supplied (no response from floppy disk drive).	Connect cable. Ensure FDE for Windows is running and com port is open.
3020	Floppy disk not inserted into floppy disk drive.	There is no floppy disk in the floppy disk drive.	Insert a floppy disk or remove the floppy disk from the drive and reinsert.
3030	Floppy disk protection is ON.	The floppy disk is set to write prohibit.	Ensure that the write protect window (the small square slide located on the lower left side of the disk) is closed and locked.
3040	File not saved on floppy disk.	The file is not saved on the floppy disk.	Save the file on the floppy disk.
3050	File saved on floppy disk.	The file is already on the floppy disk.	Erase the file on the floppy disk.
3060	Out of memory on floppy disk.	No space in storage area in floppy disk.	Insert a new floppy disk into the floppy disk drive.
3070	Number of files on floppy disk is full.	Too many files in the directory.	Copy files to a different directory or select a different directory.

Table 7-2 Troubleshooting (for MRC Controllers) - continued

Error No.	Message	Cause	Remedy
3080	I/O error on floppy disk.	Excess allowance number of retransmissions.	Try a new disk.
3090	Transmission error with floppy disk drive.	Framing error. Overrun error. Parity error.	Check the communications parameters on the controller and the computer. If the error continues, select a lower baud rate.

Table 7-3 Troubleshooting (for XRC Controllers)

Error No.	Message	Cause	Remedy
3010	Floppy disk drive cable not connected.	Cable connection error on floppy disk drive or power not supplied (no response from floppy disk drive).	Connect cable. Ensure FDE for Windows is running and com port is open.
3020	Floppy disk not inserted into floppy disk drive.	There is no floppy disk in the floppy disk drive.	Insert a floppy disk or remove the floppy disk from the drive and reinsert.
3030	Floppy disk protection is ON.	The floppy disk is set to write prohibit.	Ensure that the write protect window (the small square slide located on the lower left side of the disk) is closed and locked.
3040	File not saved on floppy disk.	The file is not saved on the floppy disk.	Save the file on the floppy disk.
3050	File saved on floppy disk.	The file is already on the floppy disk.	Erase the file on the floppy disk.
3060	Out of memory on floppy disk.	No space in storage area in floppy disk.	Insert a new floppy disk into the floppy disk drive.
3070	Number of files on floppy disk is full.	Too many files in the directory.	Copy files to a different directory or select a different directory.
3080	I/O error on floppy disk.	Excess allowance number of retransmissions.	Try a new disk.
3090	Transmission error with floppy disk drive.	Framing error. Overrun error. Parity error.	Check the communications parameters on the controller and the computer. If the error continues, select a lower baud rate.

NOTES

INDEX

A

All

- CMOS Area, 5-14
- Data in CMOS, 4-7
- User's Programs, 4-5

B

- Batch CMOS, 6-13
 - Standard CMOS, 5-13
 - Standard User Memory, 5-6
 - User Memory, 6-6

C

- C. I/O Program/I/O Name, 5-9
- C. I/O Program/I/O Name, 6-9
- Communication Cable, 3-1
- Condition Files/General Data, 6-4
- Conditional Files/Universal Data, 5-4
- Conditional Program Data, 4-3
- Customer Data, 5-11

D

- Deleting Files, 4-9, 5-16, 6-15

E

- Equipment and Supplies Required, 1-2

F

- Floppy Disk or CD Precautions, 1-2
- Formatting Disks, 4-1, 5-1, 6-1

G

- General Description, 1-1
 - Safeguarding Tips, 2-3

H

- How to Use this Manual, 1-1

I

- I/O System Data, 4-6
- Installation and Startup, 3-2
- Installation Safety, 2-4
- Introduction, 2-1

J

- Jobs, 4-1, 5-2, 6-2

L

- List of Figures, iv
- List of Tables, iv
- Loading All CMOS Area, 5-15
 - All Data in CMOS, 4-8
 - Batch CMOS, 6-13
 - Batch Standard CMOS, 5-13
 - Batch Standard User Memory, 5-7
 - Batch User Memory, 6-7
 - C. I/O Program/I/O Name, 5-10
 - C. I/O Program/I/O Name, 6-10
 - Condition Files/General Data, 6-5
 - Conditional Files/Universal Data, 5-5
 - Conditional Program Data, 4-4
 - Customer Data, 5-12
 - I/O System Data, 4-7
 - Jobs, 4-3, 5-4, 6-4
 - Parameters, 4-5, 5-8, 6-8
 - System Data, 6-12

M

- Maintenance Safety, 2-6
- Mechanical Safety Devices, 2-3
- Memory Display Limitations, 4-1, 5-1, 6-1

O

- Operation Safety, 2-5
- Other FDE Features, 4-8, 5-16, 6-14

P

- Parameters, 4-5, 5-7, 6-7
- Programming Safety, 2-4

S

- Saving All CMOS Area, 5-14
 - All Data in CMOS, 4-7
 - All Jobs, 4-2, 5-3, 6-3
 - Batch CMOS, 6-13
 - Batch Standard CMOS, 5-13
 - Batch Standard User Memory, 5-6
 - Batch User Memory, 6-6
 - C. I/O Program/I/O Name, 5-9
 - C. I/O Program/I/O Name, 6-9

INDEX

S - continued

Saving Condition Files/General Data, 6-5
Conditional Files/Universal Data, 5-5
Conditional Program Data, 4-4
Customer Data, 5-11
I/O System Data, 4-6
Parameters, 4-5, 5-7, 6-7
Selected Jobs, 4-2, 5-3, 6-3
System Data, 6-11
Setting the Communications, 5-1, 6-1
Standard Conventions, 2-2
System Data, 6-11

V

Verifying Jobs, 4-8, 5-16, 6-14

W

Write-Protect Window, 1-2